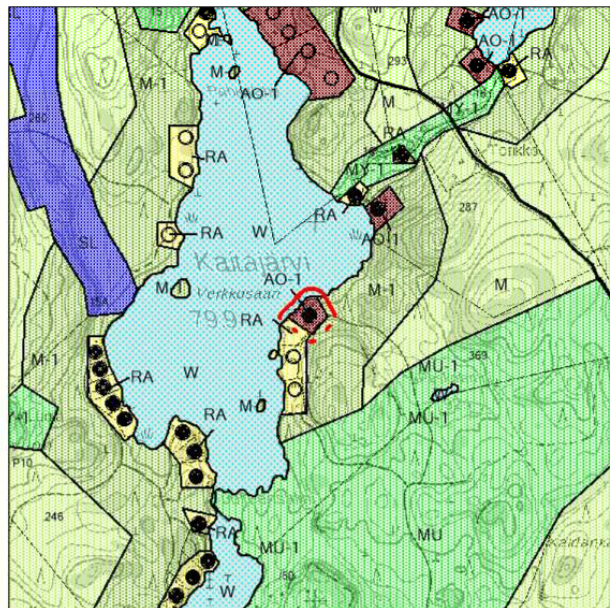
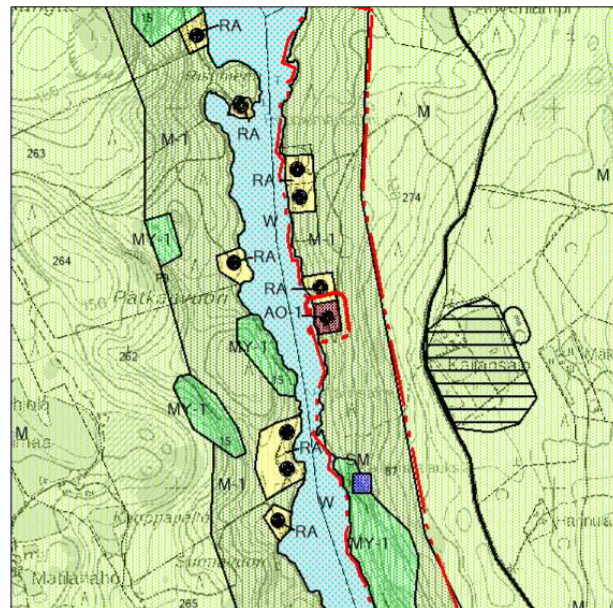


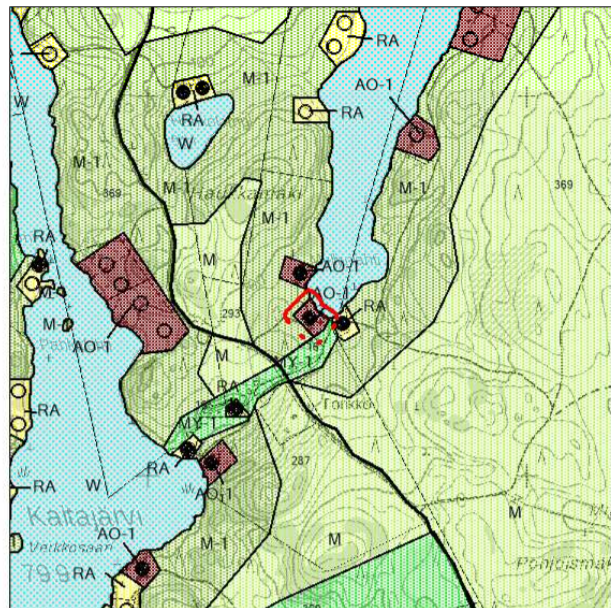
KOHDE P1



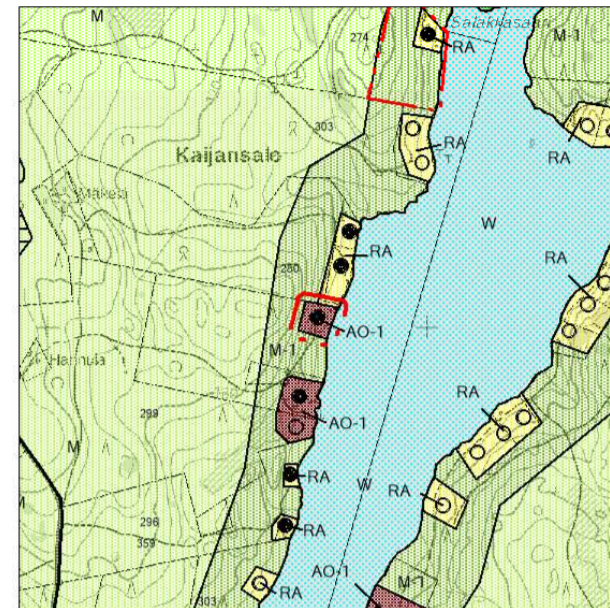
KOHDE P2



KOHDE P3



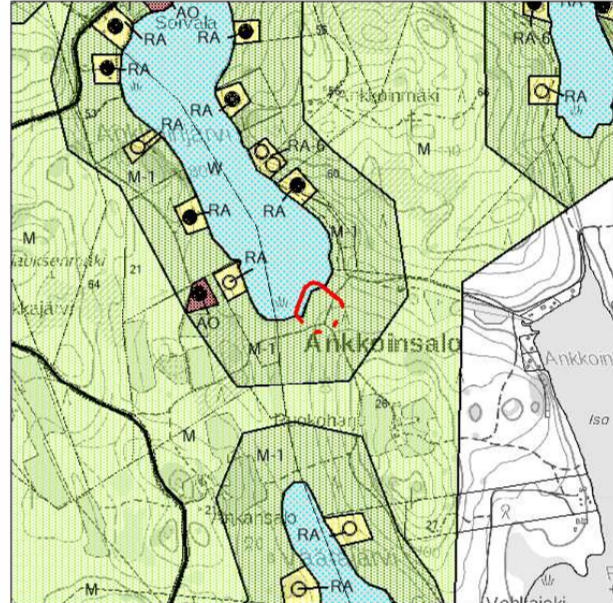
KOHDE P4



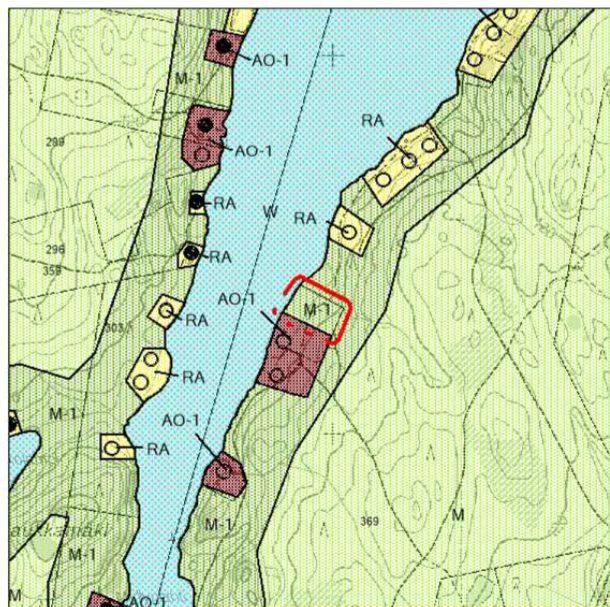
KOHDE P5



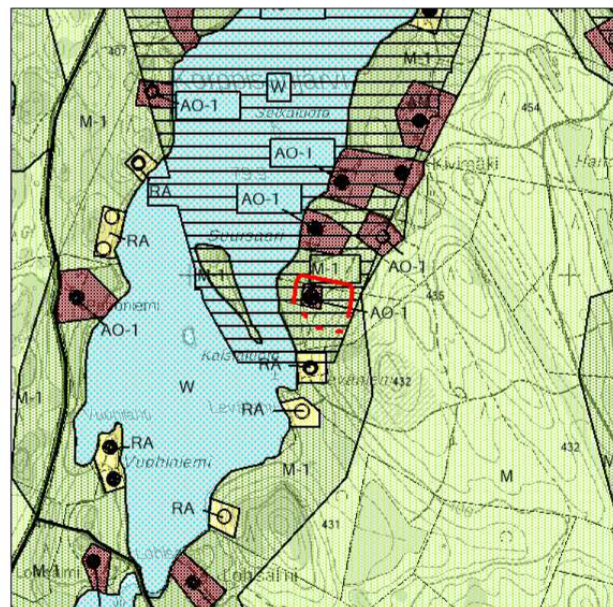
KOHDE P6



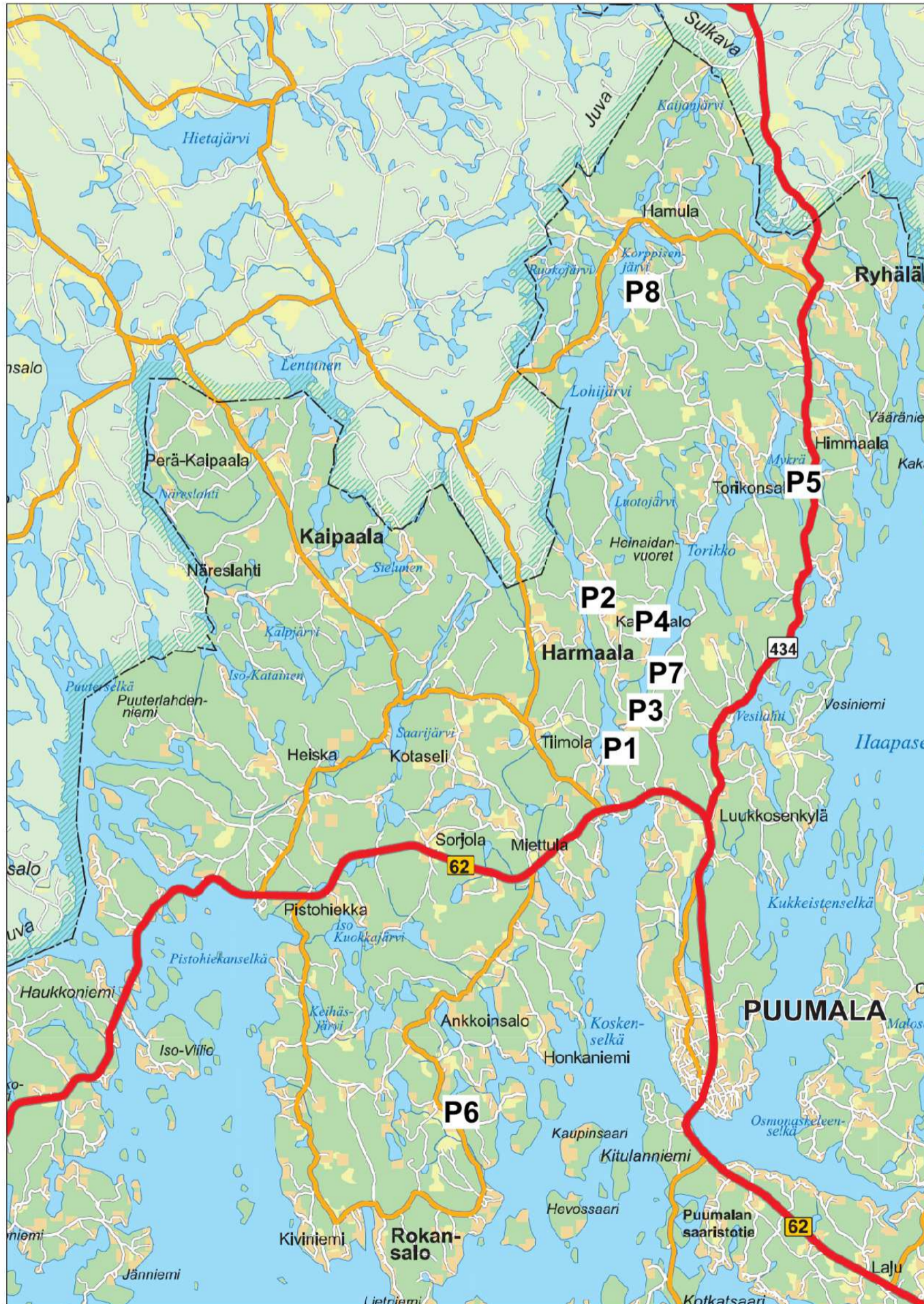
KOHDE P7



KOHDE P8



MUUTOSKOHTEIDEN P1-P8 SIJAINNIT



**PUUMALAN KUNTA**  
**RYHÄLÄN OSAYLEISKAAVAN MUUTOS**  
 Kartta 2, kohteet P1-P8  
**15.10.2020**

Ehdotusaineisto nähtävillä MRL 65 § ja MRA 19 §: 8.4. -11.5.2020  
 Hyväksytty kunnanvaltuustossa:  
 Saanut lainvoiman:

1:20 000

Järvi-Saimaan Palvelut Oy